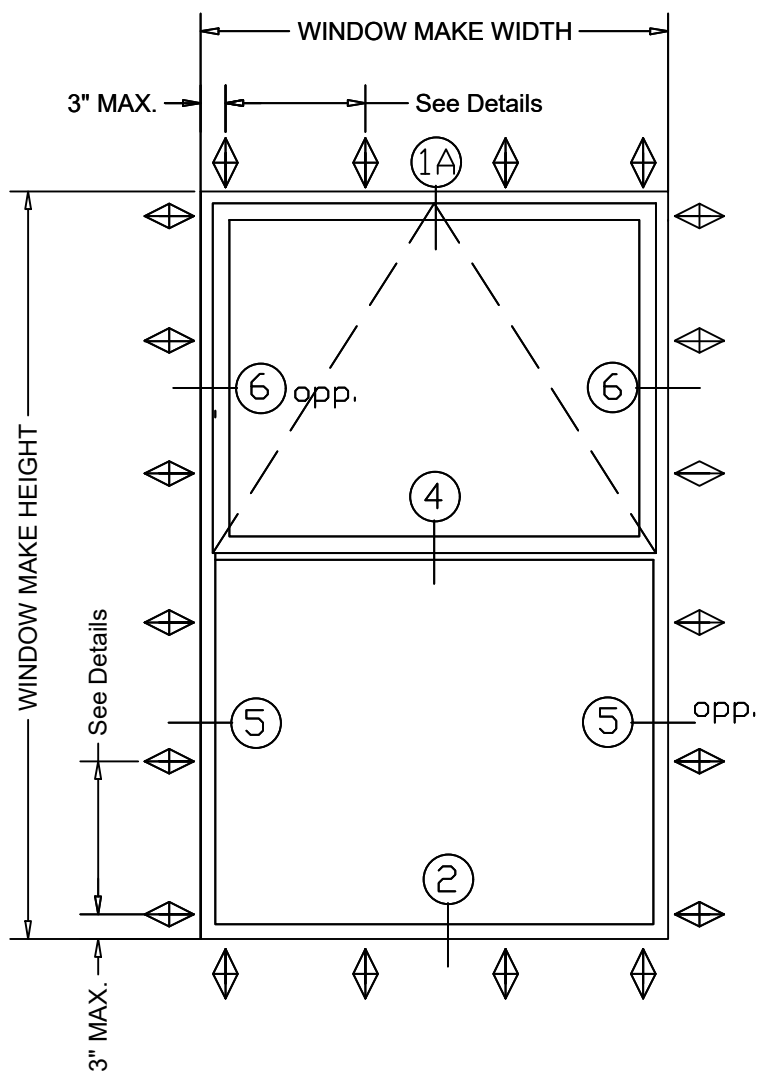
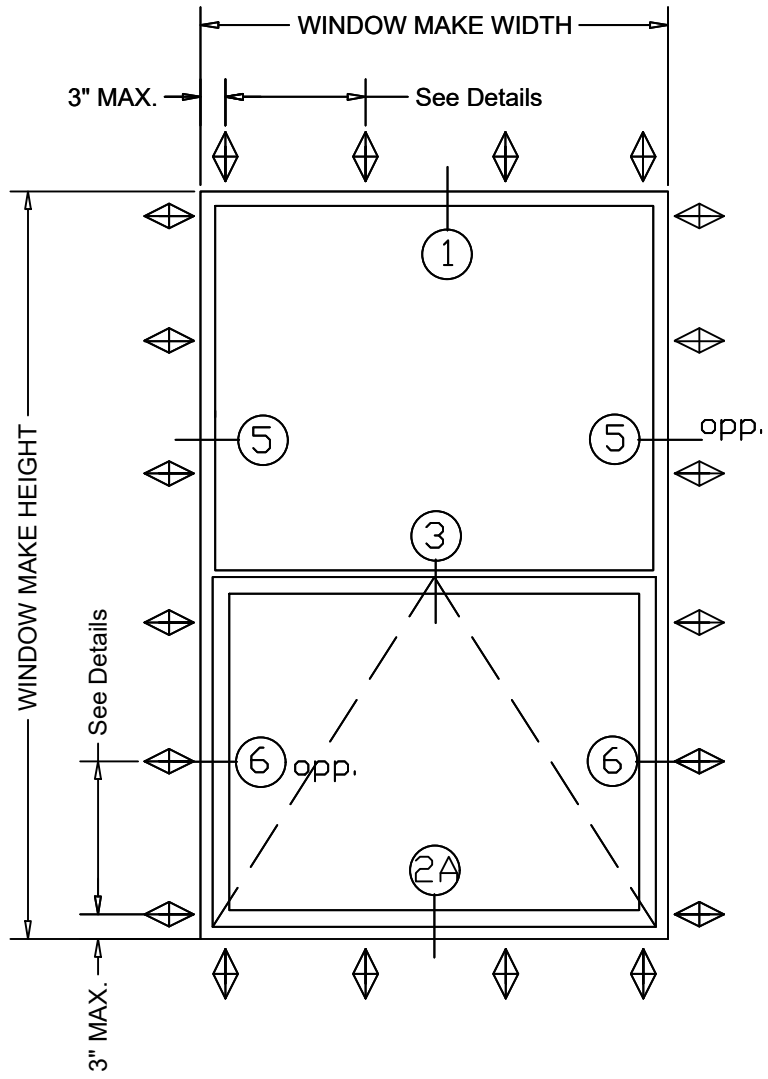


M700 AWNING -FIXED & FIXED-AWNING WINDOW - INSTALLATION DETAILS



Mark "A"

Maximum				
FW	FH	DLO-W	DLO-H	Pressure
60"	96"	N/A	N/A	± 70 PSF
Vent		52 5/8"	40 5/8"	± 70 PSF
Fixed		56 1/4"	46 13/16"	± 70 PSF

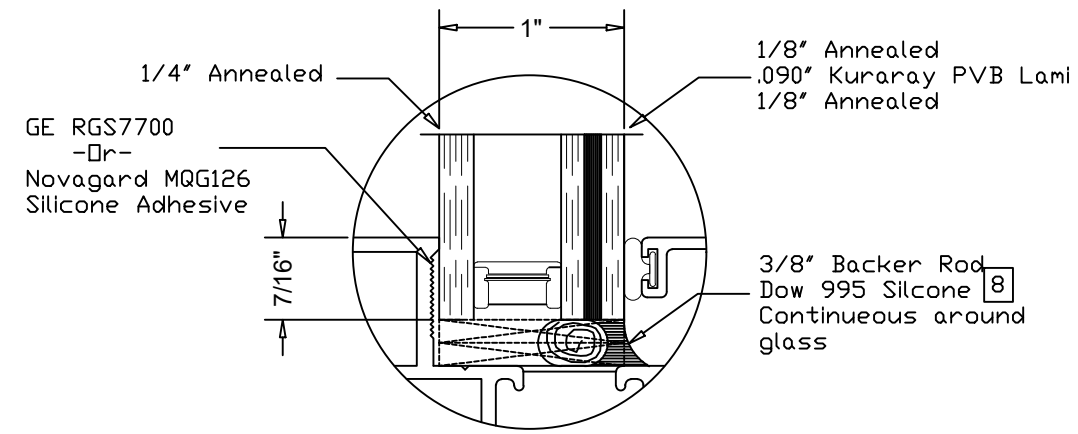


Mark "B"

Maximum				
FW	FH	DLO-W	DLO-H	Pressure
60"	96"	N/A	N/A	± 70 PSF
Fixed		56 1/4"	46 13/16"	± 70 PSF
Vent		52 5/8"	40 5/8"	± 70 PSF

Notes:

1. Installations depicted satisfy the requirements of the 8th Edition (2023) of the Florida Building Code for Wind Pressures and Overall Sizes shown.
2. As Tested Anchor spacings are shown on the Elevations.
3. Wood Framing are assumed to be S-P-F (G=0.42) or denser.
4. Metal stud frames are assumed to be a minimum 18 gauge 33 KSI Steel.
5. Concrete masonry (CMU) shall conform to ASTM C90.
6. Concrete shall be minimum $f_c = 3,000$ psi.
7. Wood Screws shall meet requirements of ANSI/ASME B18.6.1.
8. TEKS screws shall be ASTM A510 Grade 1018 or equivalent.
9. Hilti Kwik-Con+ anchors as specified in NOA 21-0628.20
10. Maximum Frame Shim Space is 1/4" as shown. Shims shall be non-compressible load bearing type.
11. Exterior and Interior shall be sealed according to Shop Drawings.
12. Products are Impact Resistant. Wind Zone 3 - Missile Level D.
13. Not for use in High Velocity Hurricane Zone (HVHZ).
14. Sealing and flashing strategies and overall water infiltration performance of the installed product are by others and not addressed by this document.



Tanya A. Dolby, P.E.
Intertek-ATI
130 Derry Ct., York, PA 17406
(717) 764-7700
Project Q3930.01-122-34

- Contents:**
- Sheet 1 of 8 - Elevations
 - Sheet 2 of 8 - Nail Fin install - Wood
 - Sheet 3 of 8 - Nail Fin install - Alternate Conditions
 - Sheet 4 of 8 - Receptor Install - Wood
 - Sheet 5 of 8 - Receptor Install - Alternate Conditions
 - Sheet 6 of 8 - Trim & Clip - Wood
 - Sheet 7 of 8 - Trim & Clip - Alternate Conditions
 - Sheet 8 of 8 - Bill of Materials

ELEVATIONS

M700 AWN-FIX & FIX-AWN

INSTALLATION INSTRUCTIONS

Project Name:

GENERAL NOTES

QUAKER WINDOW PRODUCTS WILL NOT BE RESPONSIBLE FOR FIELD MEASUREMENT, QUANTITIES, & INSTALLATION DESIGN. CONTRACTOR MUST VERIFY ALL DIMENSIONS.

PHONE (573)-744-5211
 FAX (573)-744-5586
 COMMERCIAL
 FAX (573)-744-5822
 www.quakerwindows.com

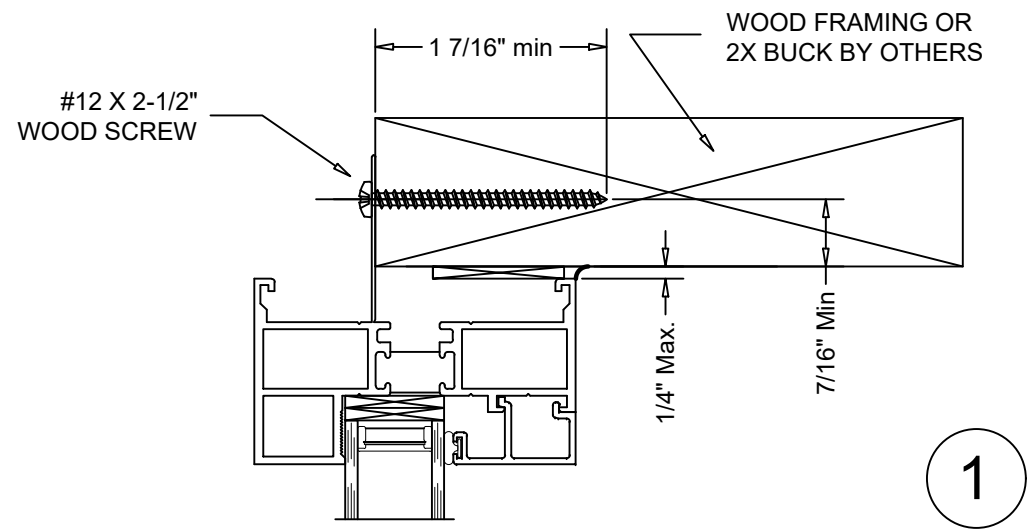
Scale: NONE
 504 Highway 63 South
 Freeburg, MO 65035
 drafting@quakerwindows.com

Sheet #: 1 of 8

Drawn By: BUD
 Date: 10-05-2023

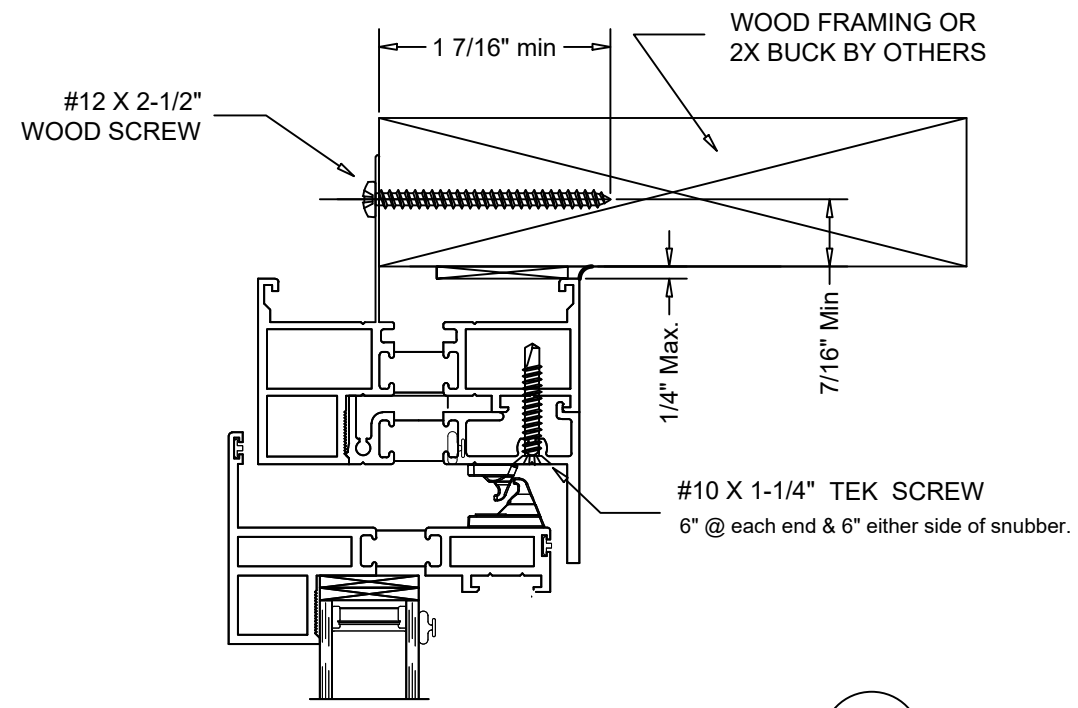
QUAKER
 COMMERCIAL WINDOW AND DOOR

M700 AWNING -FIXED & FIXED-AWNING WINDOW - NAIL FIN - WOOD SUBSTRAIT



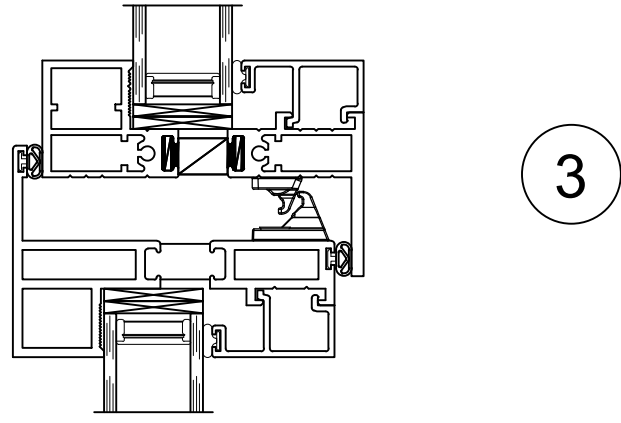
1

Anchor Spacing	
Head & Sill	14" O.C.
Jams	12" O.C.

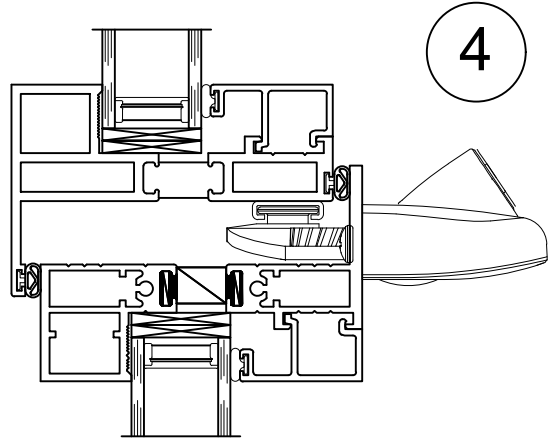


1A

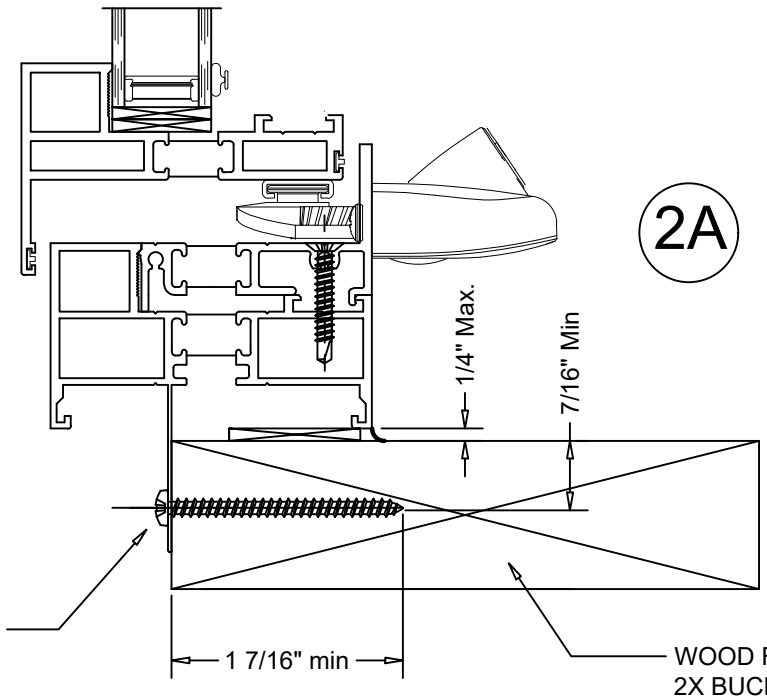
EXTERIOR



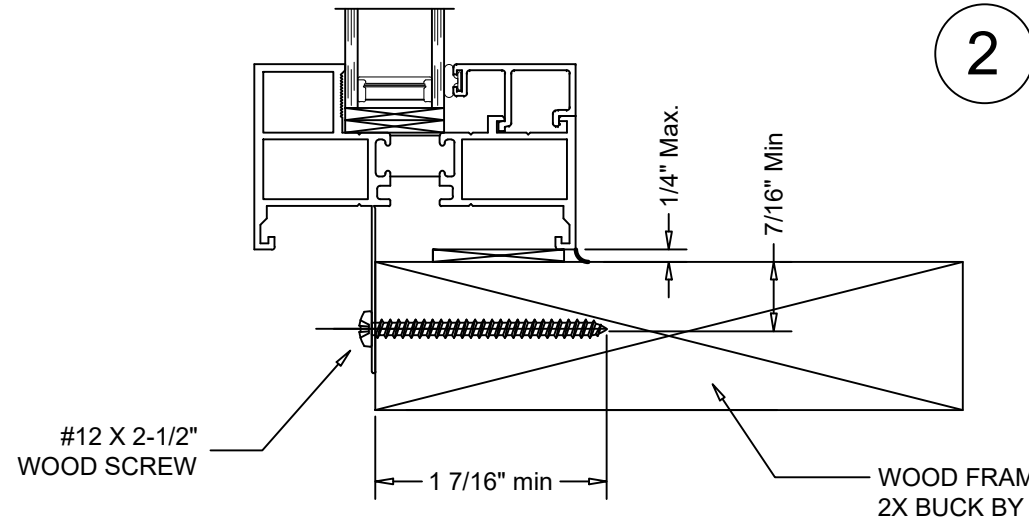
3



4



2A



2

Tanya A. Dolby, P.E.
Intertek-ATI
130 Derry Ct., York, PA 17406
(717) 764-7700
Project Q3930.01-122-34

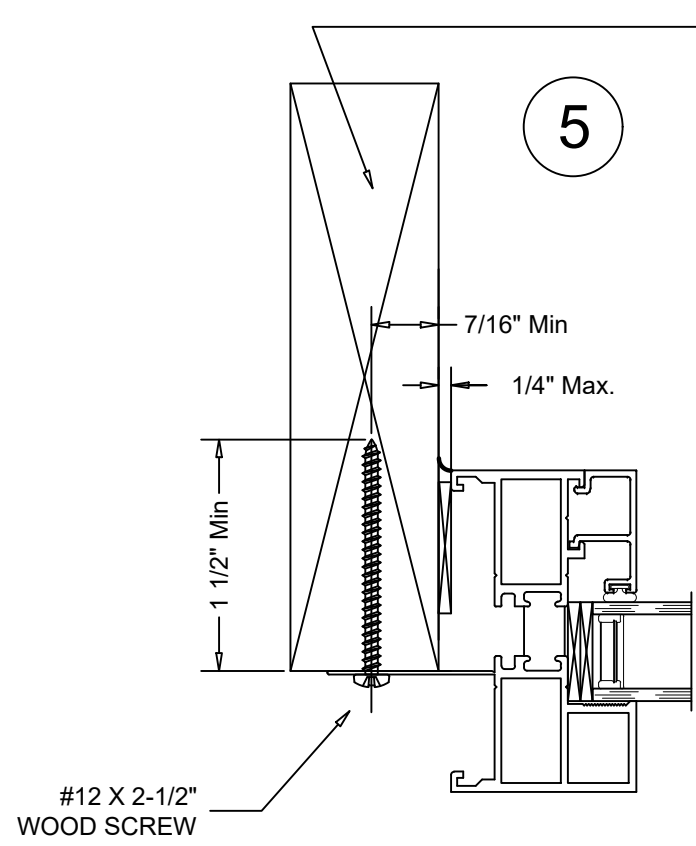
VERTICAL SECTION DETAIL WOOD FRAMING INSTALLATION

Project Name: **M700 A/F & F/A**
NAIL FIN
INSTALLATION INSTRUCTIONS

GENERAL NOTES
QUAKER WINDOW PRODUCTS WILL NOT BE RESPONSIBLE FOR FIELD MEASUREMENT, QUANTITIES, & INSTALLATION DESIGN. CONTRACTOR MUST VERIFY ALL DIMENSIONS.

PHONE (573)-744-5211
FAX (573)-744-5586
COMMERCIAL
FAX (573)-744-5822
www.quakerwindows.com
Scale: NONE
504 Highway 63 South
Freeburg, MO 65035
drafting@quakerwindows.com
Drawn By: BUD
Date: 10-05-2023
Sheet #: 2 of 8

M700 AWNING -FIXED & FIXED-AWNING WINDOW - NAIL FIN - WOOD SUBSTRAIT



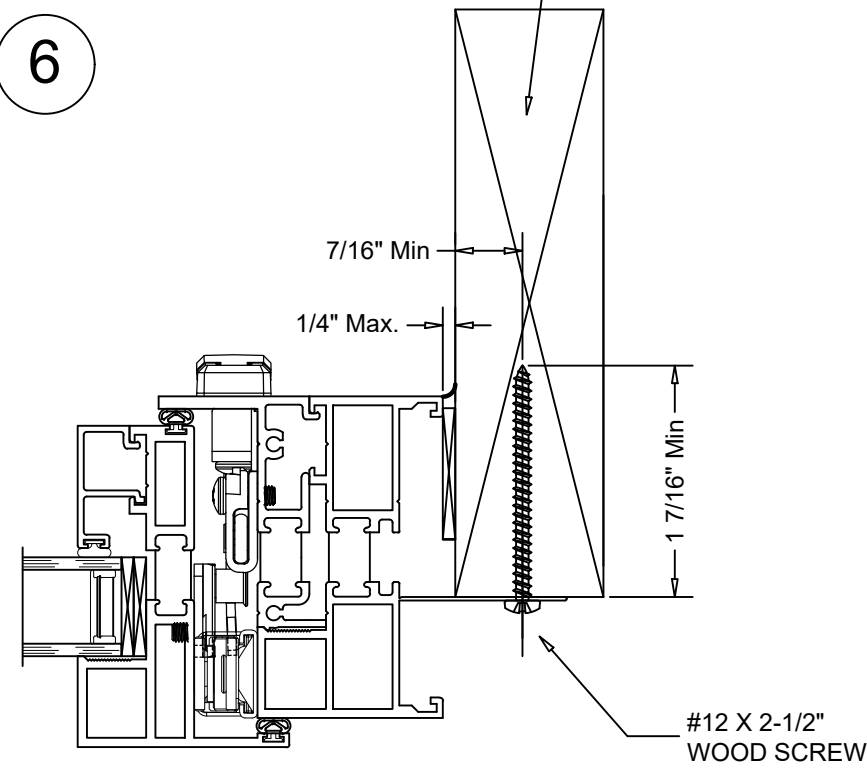
WOOD FRAMING OR
2X BUCK BY OTHERS

5

INTERIOR

Anchor Spacing	
Head & Sill	14" O.C.
Jambs	12" O.C.

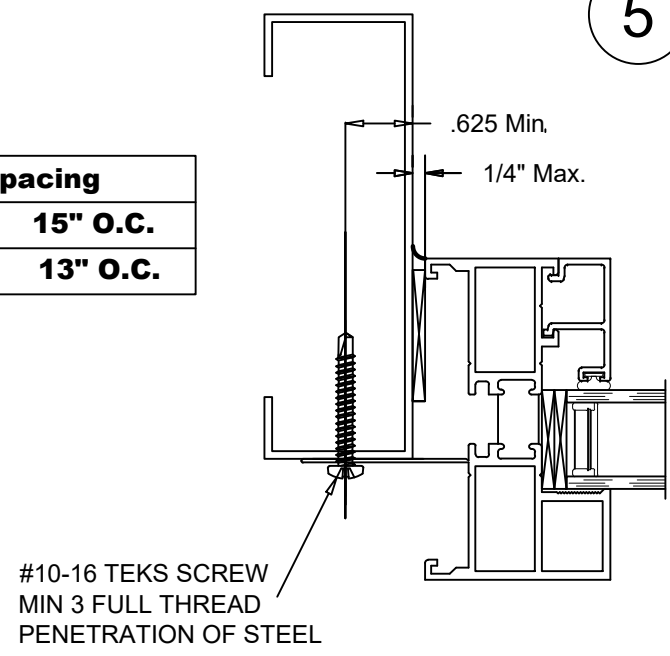
6



EXTERIOR

Anchor Spacing	
Head & Sill	15" O.C.
Jambs	13" O.C.

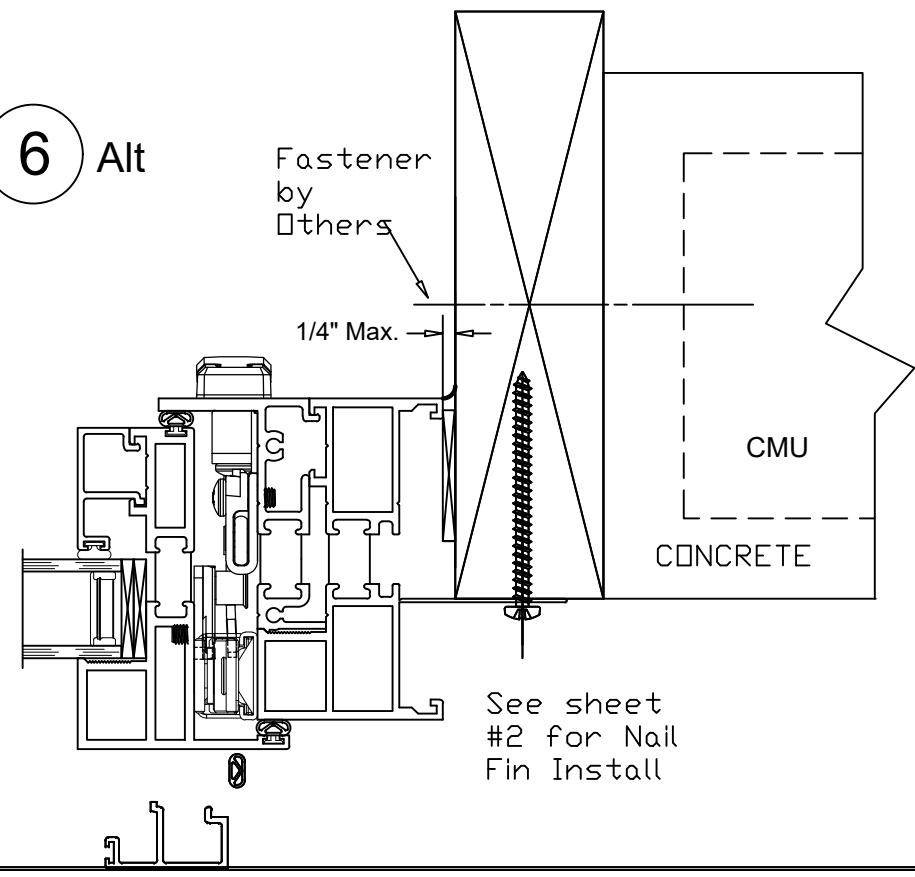
5 Alt



#10-16 TEKS SCREW
MIN 3 FULL THREAD
PENETRATION OF STEEL

HORIZONTAL SECTION DETAIL
WOOD FRAMING INSTALLATION

6 Alt



See sheet
#2 for Nail
Fin Install

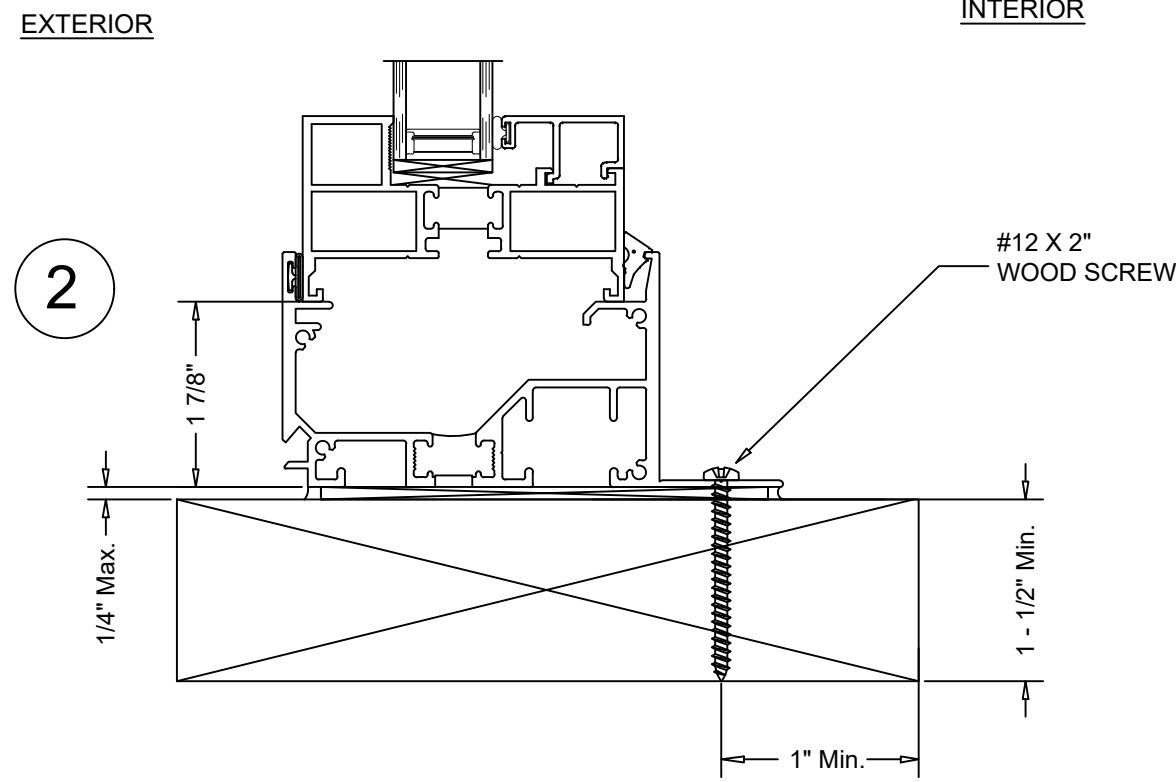
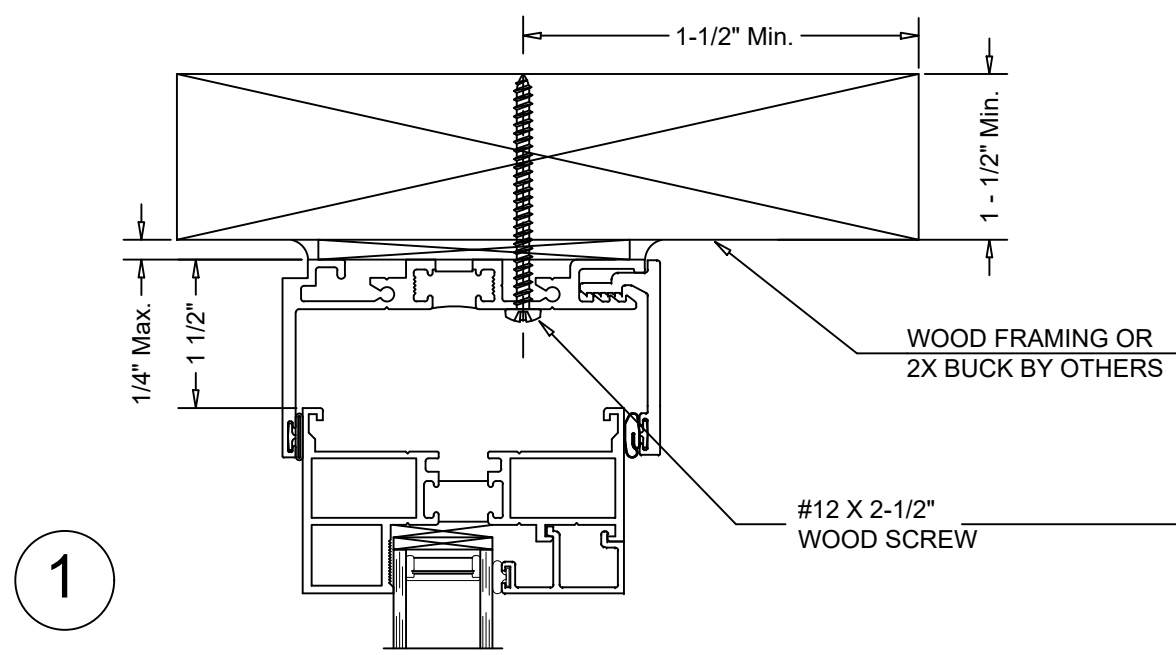
Tanya A. Dolby, P.E.
Intertek-ATI
130 Derry Ct., York, PA 17406
(717) 764-7700
Project Q3930.01-122-34

Project Name: **M700 A/F & F/A**
NAIL FIN
INSTALLATION INSTRUCTIONS

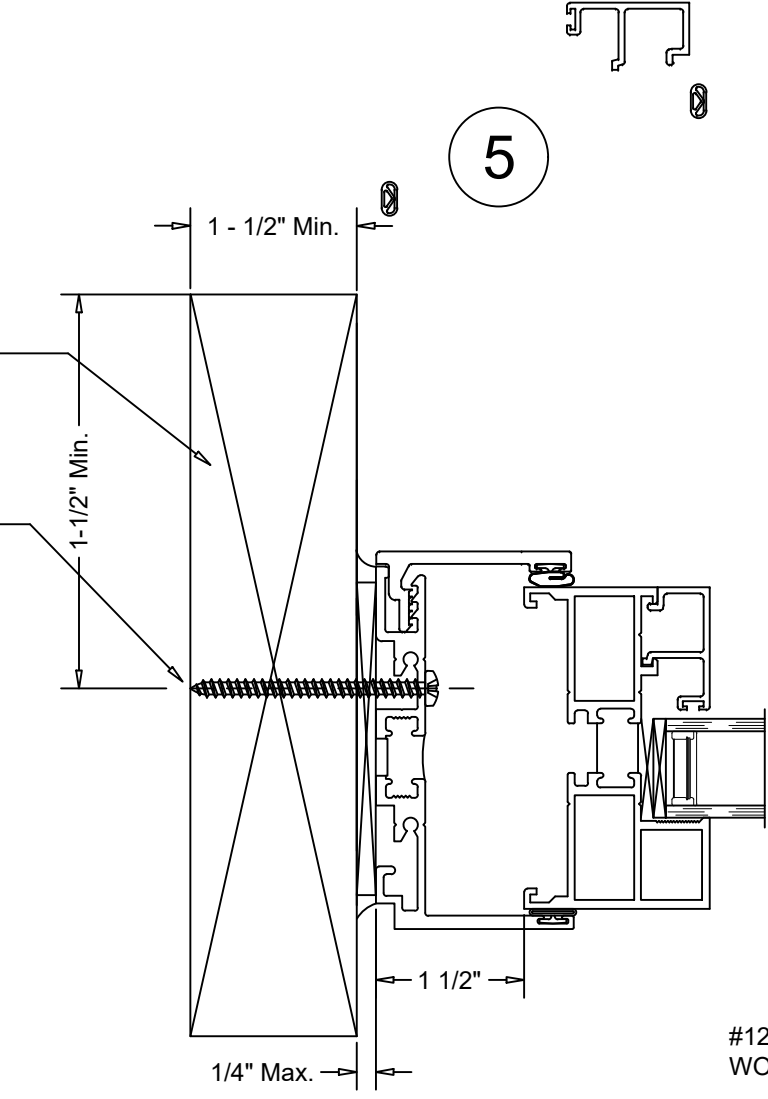
GENERAL NOTES
QUAKER WINDOW PRODUCTS
WILL NOT BE RESPONSIBLE
FOR FIELD MEASUREMENT,
QUANTITIES, & INSTALLATION
DESIGN. CONTRACTOR MUST
VERIFY ALL DIMENSIONS.

PHONE (573)-744-5211
FAX (573)-744-5586
COMMERCIAL
FAX (573)-744-5822
www.quakerwindows.com
Scale: NONE
504 Highway 63 South
Freeburg, MO 65035
drafting@quakerwindows.com
Sheet #: 3 of 8
Drawn By: **BUD**
Date: **10-05-2023**

M700 AWNING -FIXED & FIXED-AWNING WINDOW - RECEPTOR - WOOD SUBSTRATE

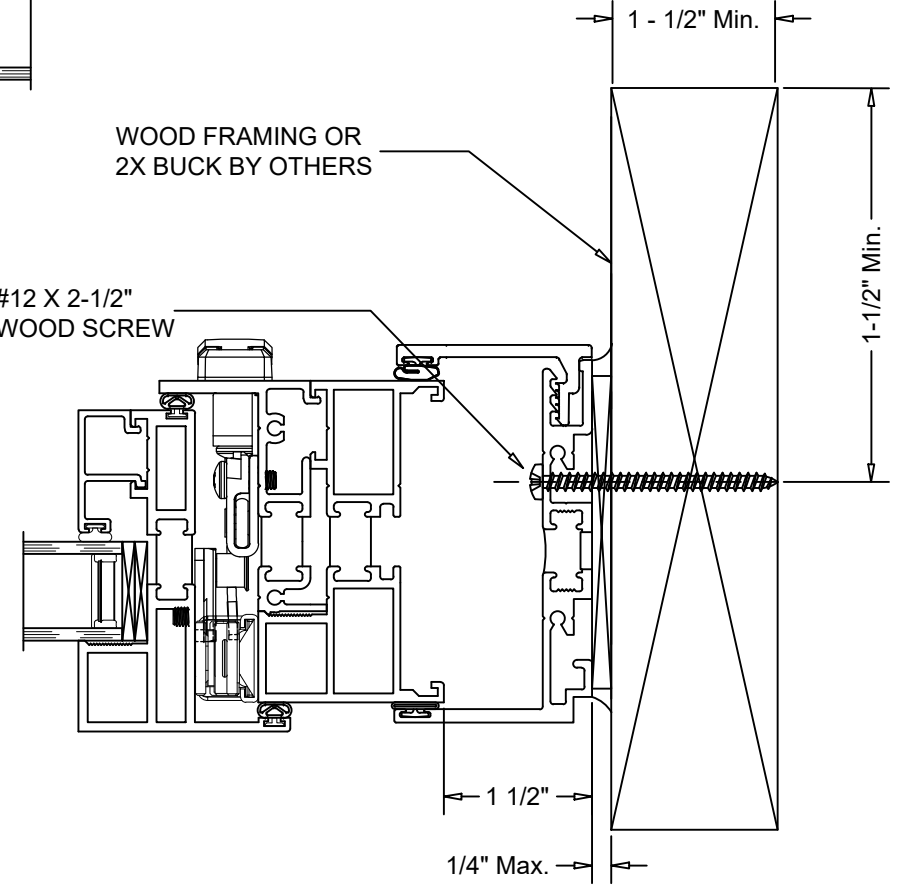


VERTICAL SECTION DETAIL
WOOD FRAMING INSTALLATION



Anchor Spacing	
Head & Sill	15" O.C.
Jams	13" O.C.

HORIZONTAL SECTION DETAIL
WOOD FRAMING INSTALLATION



6

Note:
See sheet 2 for Details 3 & 4

Tanya A. Dolby, P.E.
Intertek-ATI
130 Derry Ct., York, PA 17406
(717) 764-7700
Project Q3930.01-122-34

Project Name: **M700 A/F & F/A**
RECEPTOR
INSTALLATION INSTRUCTIONS

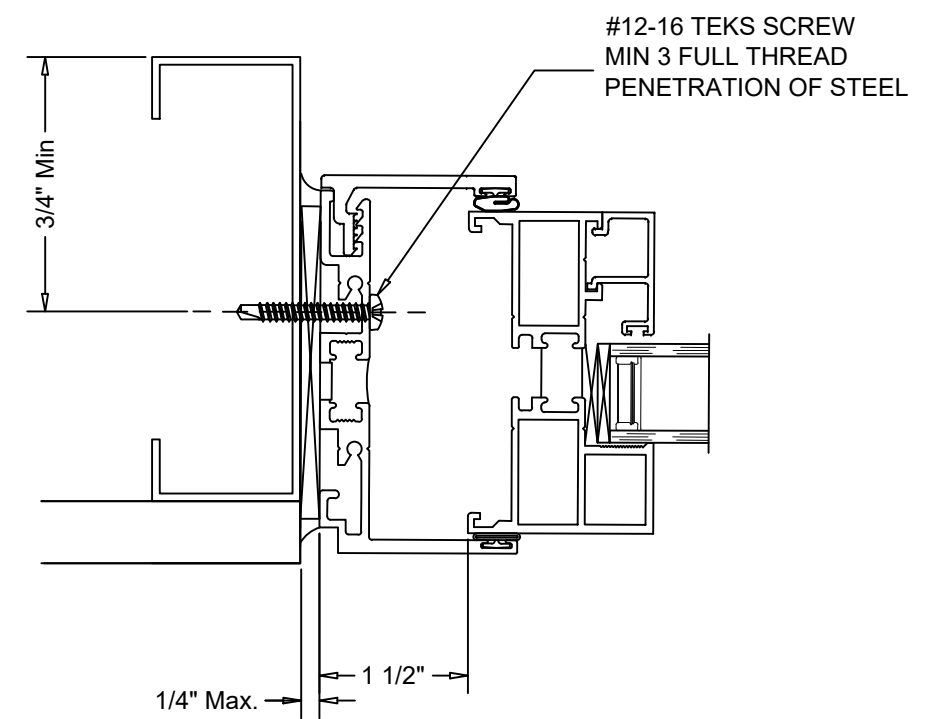
GENERAL NOTES
Description: QUAKER WINDOW PRODUCTS WILL NOT BE RESPONSIBLE FOR FIELD MEASUREMENT, QUANTITIES, & INSTALLATION DESIGN. CONTRACTOR MUST VERIFY ALL DIMENSIONS.

PHONE (573)-744-5211
FAX (573)-744-5586
COMMERCIAL
FAX (573)-744-5822
www.quakerwindows.com
Scale: NONE
504 Highway 63 South
Freeburg, MO 65035
drafting@quakerwindows.com
Sheet #: 4 of 8
Drawn By: BUD
Date: 10-05-2023

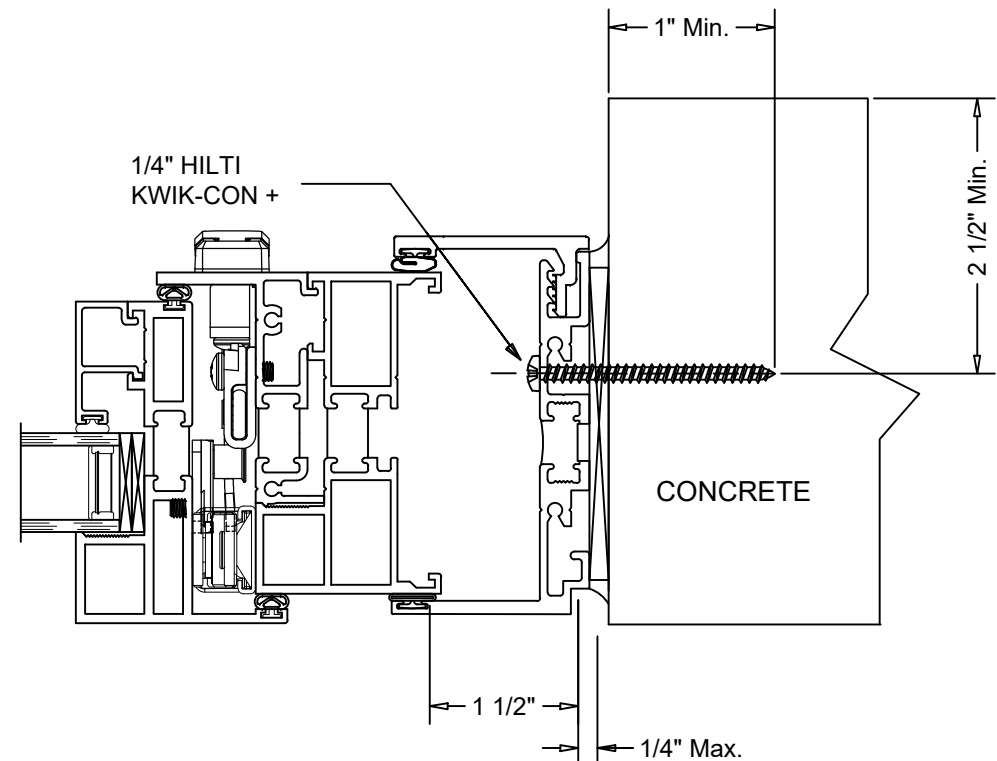


M700 AWNING -FIXED & FIXED-AWNING WINDOW - RECEPTOR - ADDITIONAL SUBSTRATES

5 Alt

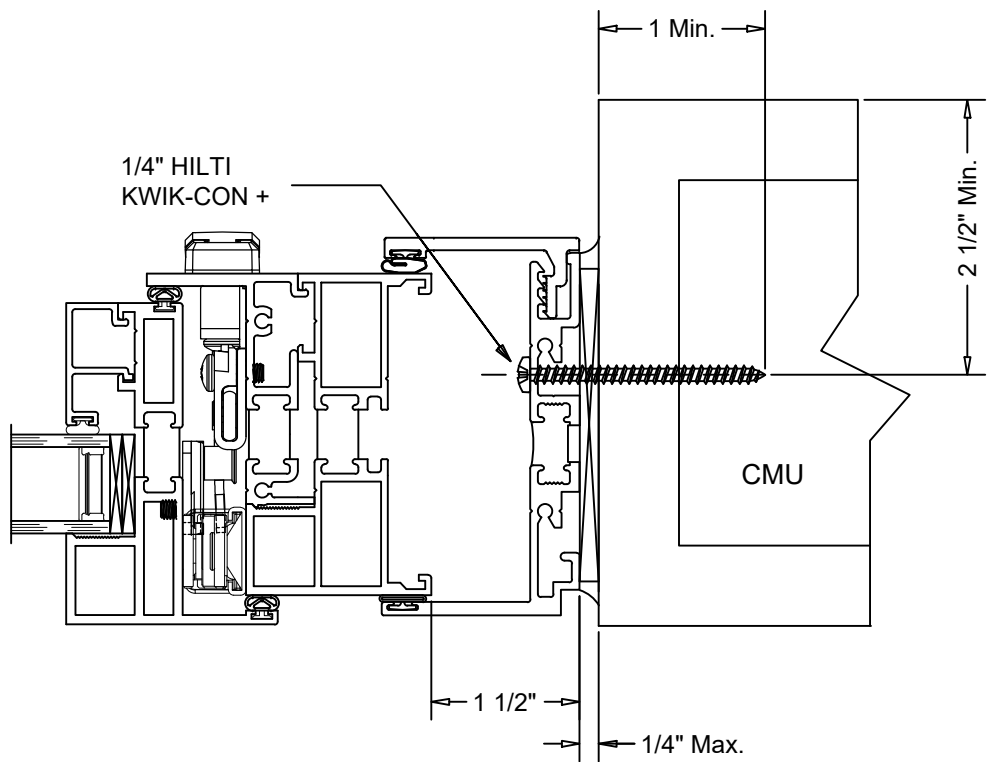


6 Alt



Anchor Spacing	
Head & Sill	15" O.C.
Jambs	13" O.C.

6 Alt



Anchor Spacing	
Head & Sill	15" O.C.
Jambs	13" O.C.

Tanya A. Dolby, P.E.
Intertek-ATI
130 Derry Ct., York, PA 17406
(717) 764-7700
Project Q3930.01-122-34

Project Name: **M700 A/F & F/A RECEPTOR**
INSTALLATION INSTRUCTIONS

GENERAL NOTES
QUAKER WINDOW PRODUCTS WILL NOT BE RESPONSIBLE FOR FIELD MEASUREMENT, QUANTITIES, & INSTALLATION DESIGN. CONTRACTOR MUST VERIFY ALL DIMENSIONS.

PHONE (573)-744-5211
FAX (573)-744-5586
COMMERCIAL
FAX (573)-744-5822
www.quakerwindows.com

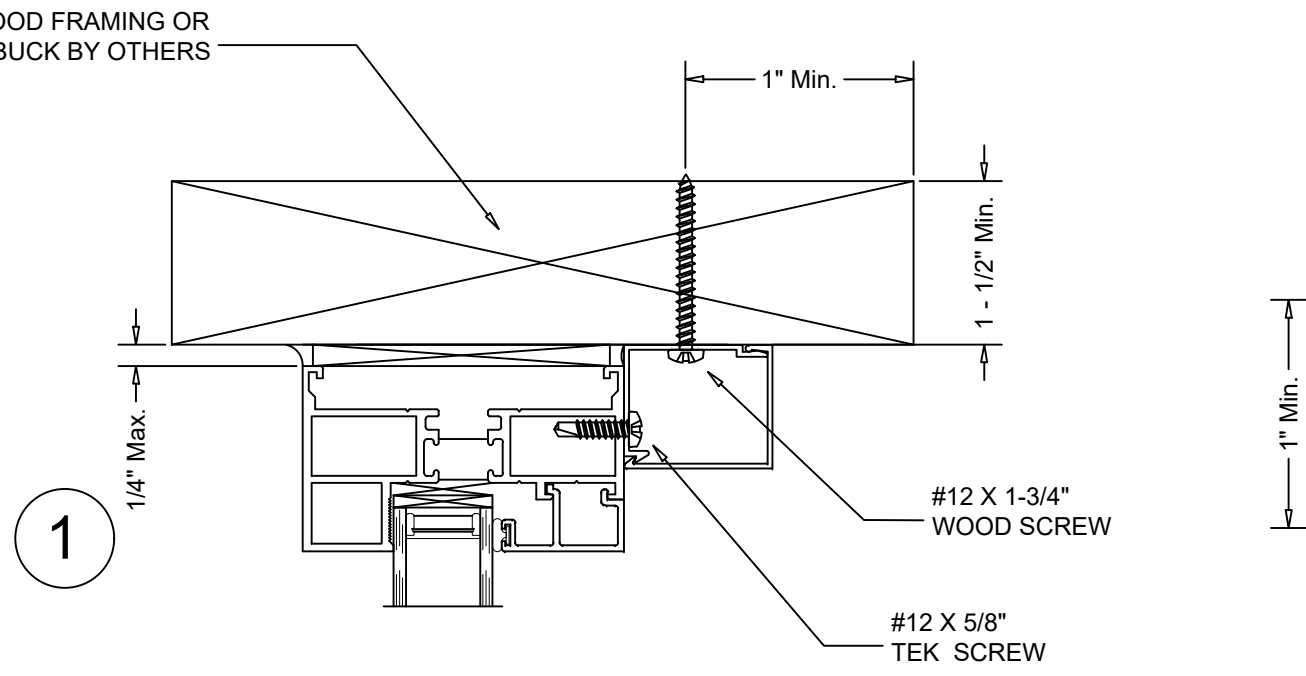
Scale: NONE
Sheet #: 5 of 8

504 Highway 63 South
Freeburg, MO 65035
drafting@quakerwindows.com

Drawn By: **BUD**
Date: **10-05-2023**

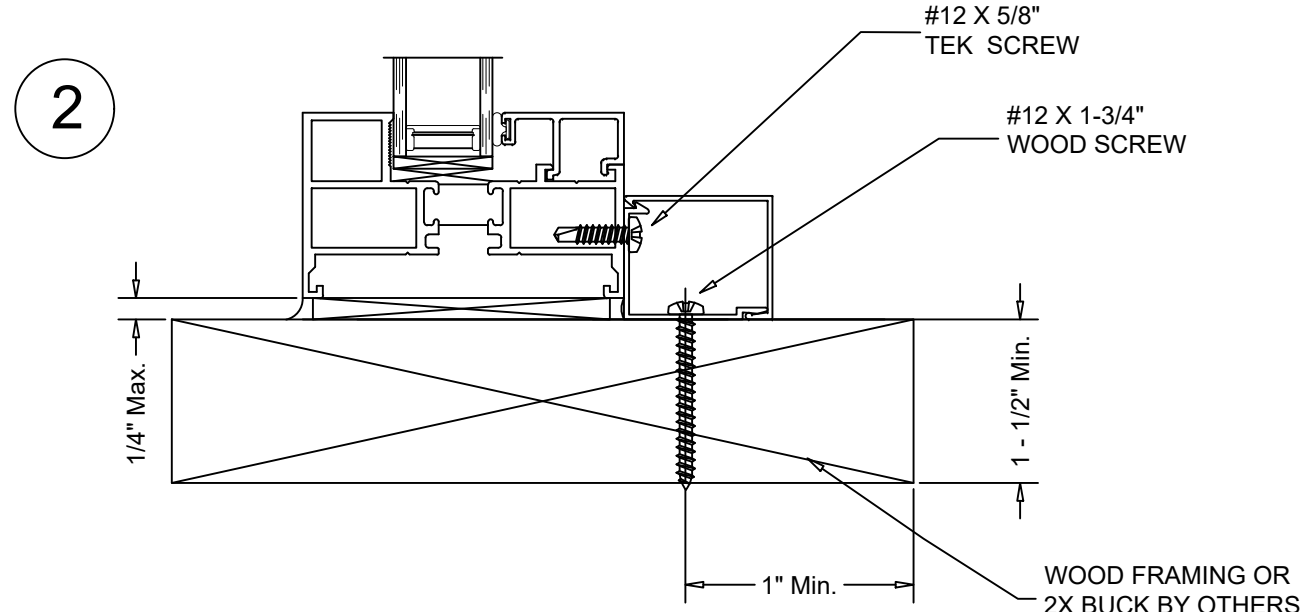


M700 AWNING -FIXED & FIXED-AWNING WINDOW - TRIM & CLIP - WOOD SUBSTRATE

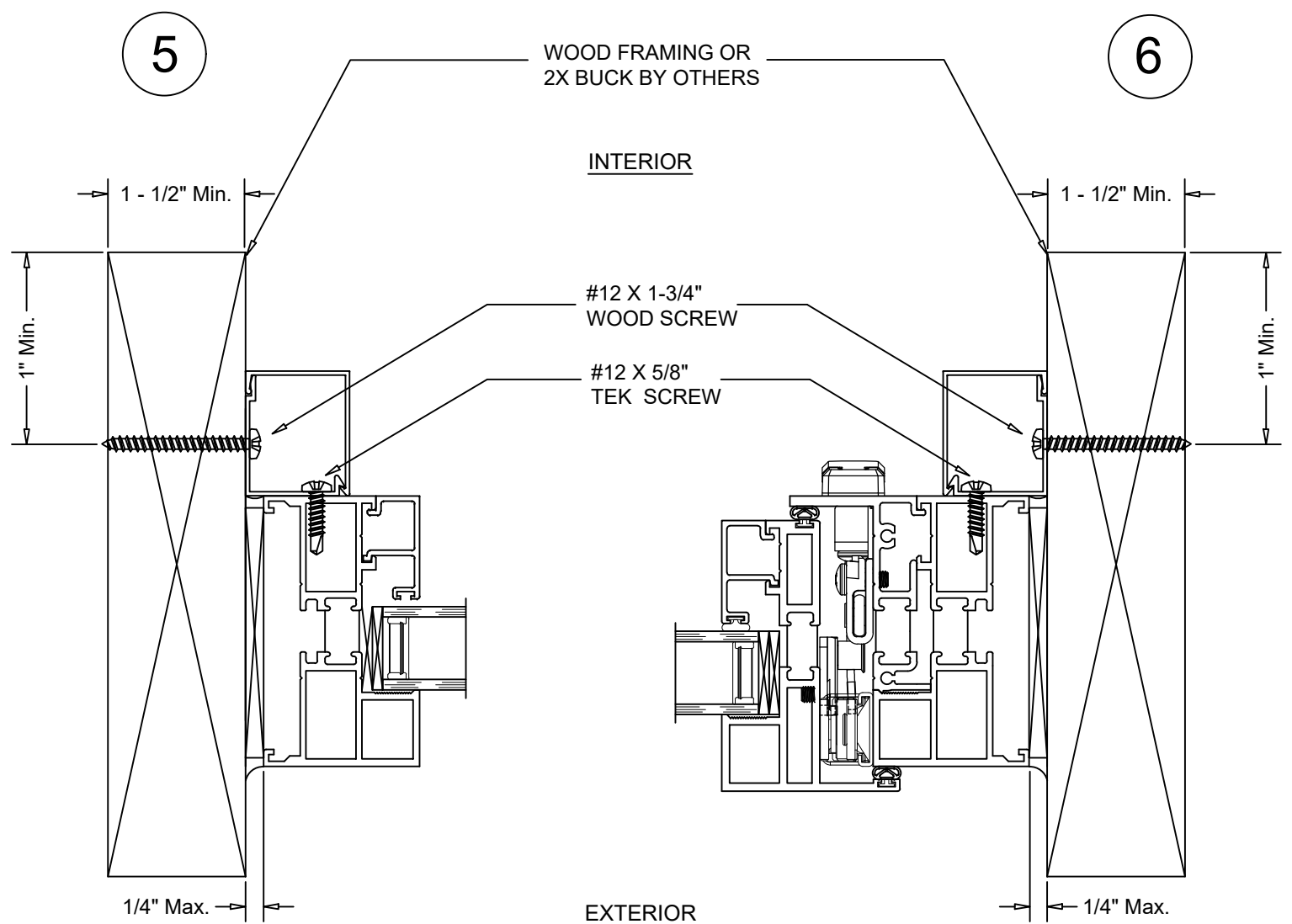


EXTERIOR

INTERIOR



VERTICAL SECTION DETAIL
WOOD FRAMING INSTALLATION



INTERIOR

EXTERIOR

HORIZONTAL SECTION DETAIL
WOOD FRAMING INSTALLATION

Anchor Spacing	
Head & Sill	15" O.C.
Jams	13" O.C.

Note:
See sheet 2 for Details 3 & 4

Tanya A. Dolby, P.E.
Intertek-ATI
130 Derry Ct., York, PA 17406
(717) 764-7700
Project Q3930.01-122-34

Project Name: **M700 A/F & F/A TRIM & CLIP**

GENERAL NOTES

QUAKER WINDOW PRODUCTS WILL NOT BE RESPONSIBLE FOR FIELD MEASUREMENT, QUANTITIES, & INSTALLATION DESIGN. CONTRACTOR MUST VERIFY ALL DIMENSIONS.

PHONE (573)-744-5211
FAX (573)-744-5586
COMMERCIAL
FAX (573)-744-5822
www.quakerwindows.com

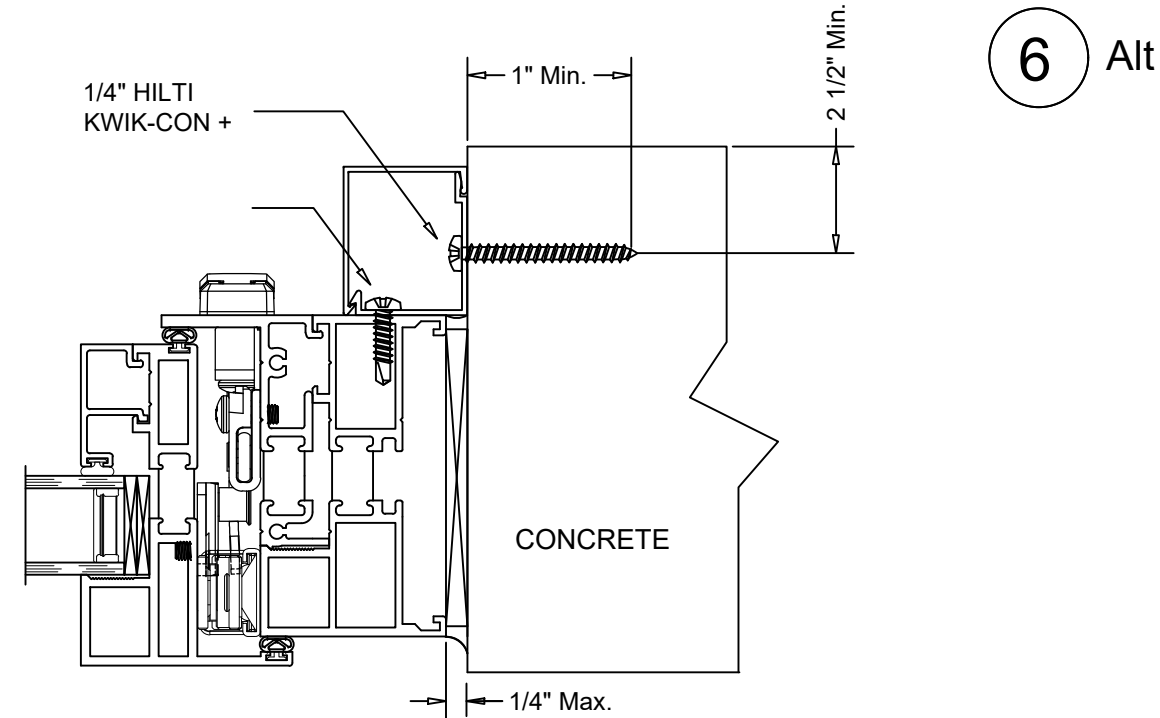
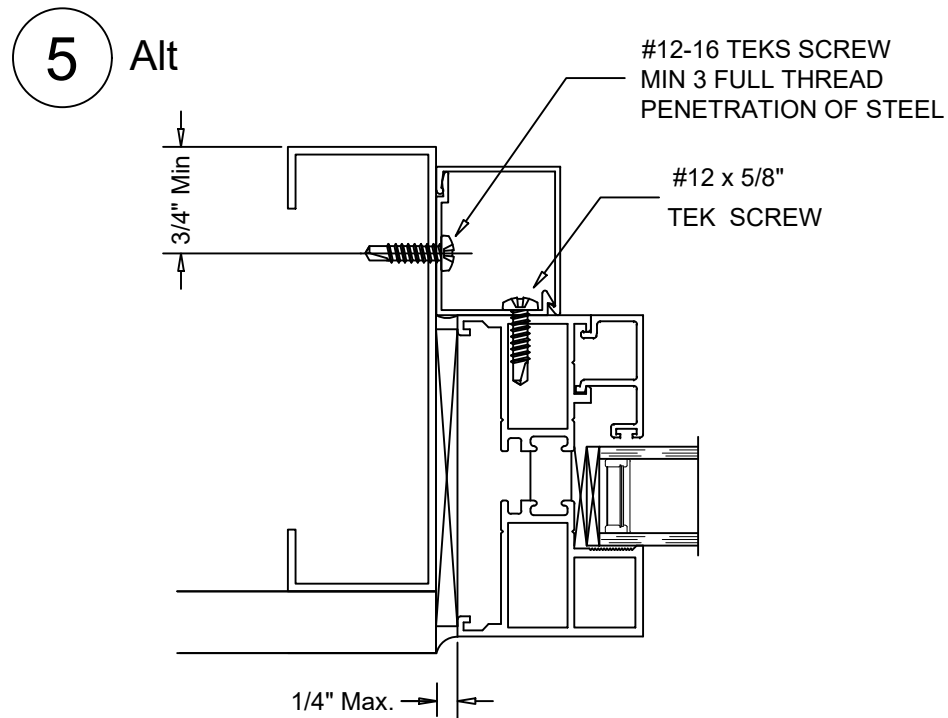
Scale: NONE
Sheet #: 6 of 8

504 Highway 63 South
Freeburg, MO 65035
drafting@quakerwindows.com

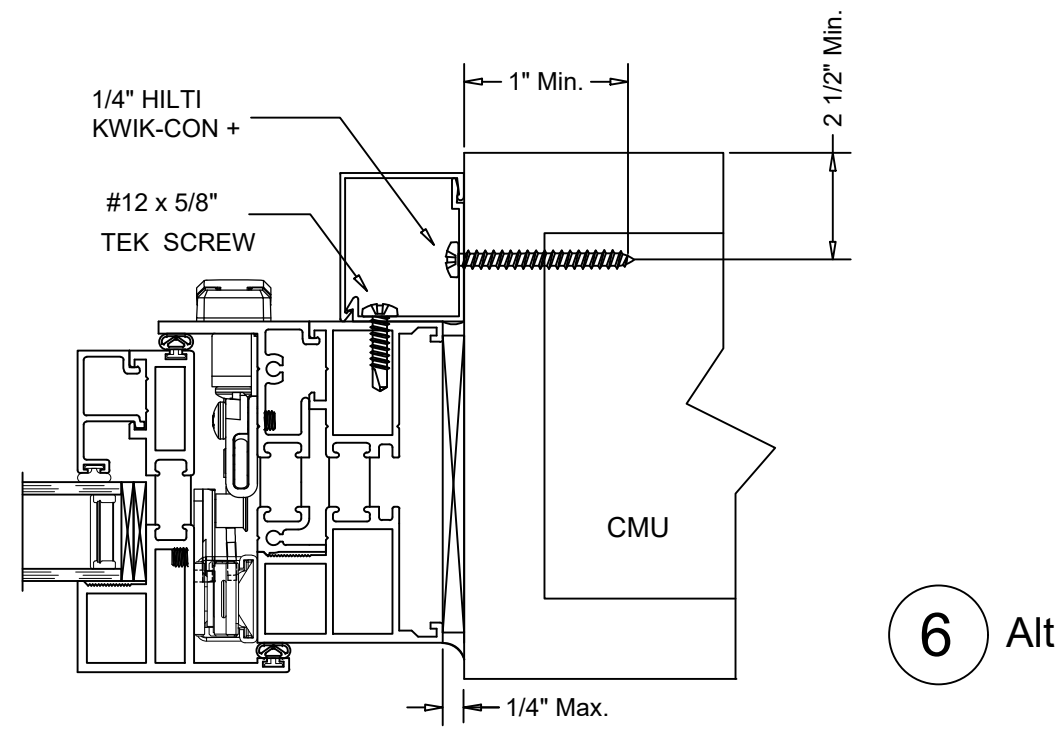
Drawn By: **BUD**
Date: **10-05-2023**

QUAKER
COMMERCIAL WINDOW AND DOOR

M700 AWNING -FIXED & FIXED-AWNING WINDOW - TRIM & CLIP - ADDITIONAL SUBSTRATES



Anchor Spacing	
Head & Sill	15" O.C.
Jamb	13" O.C.



Tanya A. Dolby, P.E.
Intertek-ATI
130 Derry Ct., York, PA 17406
(717) 764-7700
Project Q3930.01-122-34

Project Name: **M700 A/F & F/A TRIM & CLIP**

INSTALLATION INSTRUCTIONS

GENERAL NOTES

QUAKER WINDOW PRODUCTS WILL NOT BE RESPONSIBLE FOR FIELD MEASUREMENT, QUANTITIES, & INSTALLATION DESIGN. CONTRACTOR MUST VERIFY ALL DIMENSIONS.

PHONE (573)-744-5211
FAX (573)-744-5586
COMMERCIAL
FAX (573)-744-5822
www.quakerwindows.com

Scale: NONE

504 Highway 63 South
Freeburg, MO 65035
drafting@quakerwindows.com

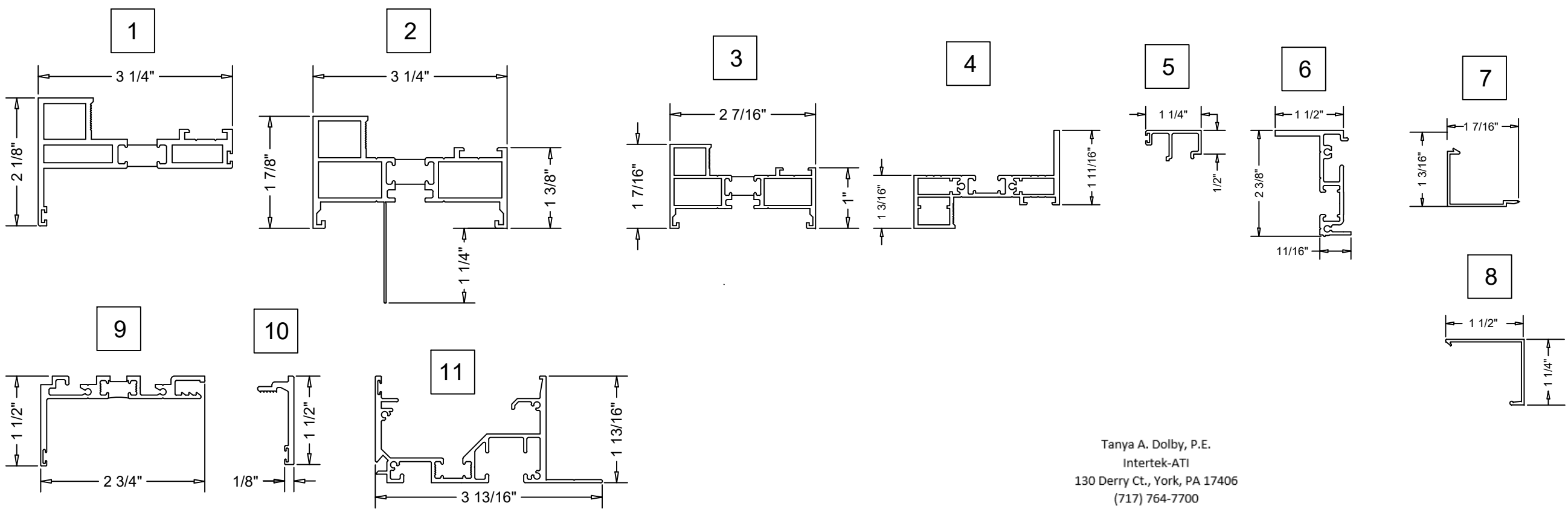
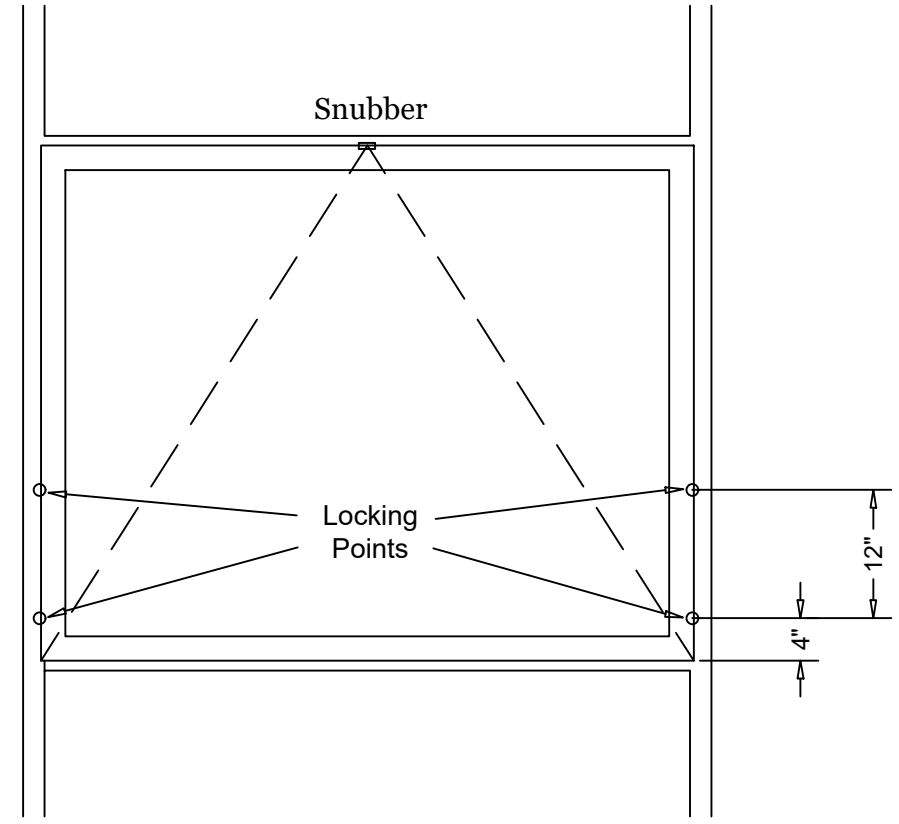
Drawn By: **BUD**

Date: **10-05-2023**

Sheet #: **7 of 8**

M700 AWNING -FIXED & FIXED-AWNING WINDOW - BILL OF MATERIAL

Bill of Materials				
NO.	Description	Part Number	Material	Manufacturer
1	Sash	M21191	Aluminum 6063-T5	Tower Extrusions
2	Frame w/Nail Fin	M52730	Aluminum 6063-T5	BRT Extrusions
3	Frame	M52731	Aluminum 6063-T5	BRT Extrusions
4	Fixed/Oper Horizontal	M21214	Aluminum 6063-T5	Tower Extrusions
5	Glazing Bead	M21165	Aluminum 6063-T5	Tower Extrusions
6	Frame Adapter	M16751	Aluminum 6063-T5	Tower Extrusions
7	Trim Base	M15266	Aluminum 6063-T5	Tower Extrusions
8	Trim Cover	M15267	Aluminum 6063-T5	Tower Extrusions
9	Receptor Head & Jamb	M17541	Aluminum 6063-T5	BRT Extrusions
10	Receptor Clip	M18065	Aluminum 6063-T5	BRT Extrusions
11	Receptor Sill	M17539	Aluminum 6063-T5	BRT Extrusions
	Backbedding	MQP126	Silicone	NovaGard
	Structural Sealant	Dow Corning 995	Silicone	Dow Corning
	Maxim MP Lock Assy	24-40-02-001		Truth
	16.5 Tie-Bar 2pt	15070.92		Truth
	Keeper	33703.00.0500		Truth
	24" 4-Bar Hinge	220		Advantage Hardware
	11" Awn Operator	55-10-02-111		Truth
	Snubber	23555.62		Truth



Tanya A. Dolby, P.E.
 Intertek-ATI
 130 Derry Ct., York, PA 17406
 (717) 764-7700
 Project Q3930.01-122-34

Project Name: M700 A/F & F/A

BILL OF MATERIAL

INSTALLATION INSTRUCTIONS

GENERAL NOTES

QUAKER WINDOW PRODUCTS WILL NOT BE RESPONSIBLE FOR FIELD MEASUREMENT, QUANTITIES, & INSTALLATION DESIGN. CONTRACTOR MUST VERIFY ALL DIMENSIONS.

Scale: NONE

Sheet #: 8 of 8

PHONE (573)-744-5211
 FAX (573)-744-5586
 COMMERCIAL
 FAX (573)-744-5822
 www.quakerwindows.com

504 Highway 63 South
 Freeburg, MO 65035
 drafting@quakerwindows.com

QUAKER
COMMERCIAL WINDOW AND DOOR

Drawn By: **BUD**

Date: **10-05-2023**